

Street GUARDIAN



DIGITAL VIDEO RECORDER

SGZC125G



USER MANUAL

INTRODUCTION

Thank you for purchasing the Street Guardian SGZC12SG digital video recorder, please read and follow this user manual to obtain the best performance and reliability from your product.

Your camera comes with most settings preconfigured and is ready to use, there are a number of user selectable options that can be changed, please be sure to check and adjust the time zone offset to suit your region so that the data in your recordings is representative of the correct time and date.

The time and date will adjust automatically once GPS signal is received, the timezone offset ensures that the information is accurate.

To adjust the timezone settings press the **MENU** key, enter the **SETUP** submenu and select **TIMEZONE**

[Note] The camera will periodically sync the time and date via GPS, if you are in a region that supports summertime or DST (Daylight Savings Time) offsets then it will be necessary to enter the timezone settings menu and set the summertime setting ON or OFF according to seasonal requirements, the timezone will not need to be altered once correctly set for your region.

PRODUCT SAFETY & PRECAUTIONS

The product has been designed and engineered to operate at temperatures of between -4° F through to +176°F, operating outside of these temperatures may produce unpredictable results and should be avoided.

Clean only with a soft dry cloth, being careful not to use excessive pressure when cleaning the lens, the use of liquids or cleaning fluids may damage the product and void your warranty.

The camera records video in full high definition 1080P/30fps at 15Mbit/sec, a large amount of data is generated for the video recording function. To prevent recording problems it is recommended to only use good quality high speed Class 10 memory cards.

[Note] Memory cards up to 32GB can be formatted in the camera, memory cards greater than 32GB should be formatted in a computer using the FAT32 file system for optimal results. Further details about how to format larger memory cards can be found in the support section of our website.

The camera does not support hot plugging of the memory card.

Be sure to remove or replace the memory card only while the camera is powered off or the memory card may be damaged.

There are no user serviceable parts in this product.

Unauthorised attempts to dismantle or repair this product will void the warranty.

Please ensure that you install and use this product in accordance with all local laws.

An electronic copy of this user manual and any updates are available for download from the support section of our website www.streetguardian.info

CAMERA LAYOUT & OVERVIEW



DESCRIPTION OF BUTTONS



POWER/REC - Long press the **POWER/REC** button to turn the camera ON or OFF, short press to start or stop a recording or take a photo when in capture mode.



MUTE - Press the **MUTE** button to enable or disable audio recording.



MENU - Press the **MENU** button to enter the camera settings menu.



EMERGENCY - Press the **EMERGENCY** button to protect the current recording segment, the files will be filed in the **EVENT** folder.

[Note] The button function will vary according to which mode the camera is in, standby, recording, capture or playback.

MENU will display the following icons on the touch panel display.



VIDEO - Return the camera to video recording mode, pressing anywhere on the display will commence recording.



PHOTO - Enter the photo capture mode, pressing anywhere on the display will take a photo.



REVIEW - Enter the playback mode where videos or photos can be viewed on screen.



RECORD SETTING - Enter the video recording settings sub menu.



SETUP - Enter the general settings sub menu.



ABOUT - Display the camera model and firmware version information.

SETTINGS OPTIONS & SUB MENUS



RECORD SETTING OPTIONS



VIDEO SIZE – Change the recording resolution.



MICROPHONE – Enable or disable audio recording.



CYCLIC TIME – Choose the recording segment length.



OVERLAP – Allows seamless recording or with overlap.



MOTION – Enable or disable motion detect recording.



G-SENSOR – Adjust the G-Sensor sensitivity for auto file locking.



SETUP OPTIONS



DATE & TIME – View or change date and time settings.

[Note] The date and time is automatically set via GPS



LANGUAGE – Change the system language.



TIMEZONE – Regional settings, set the timezone, set summertime (DST) offset, select KPH or MPH speed display.



FORMAT – allows you to format the SD memory card.



TV – Configure the AV output for PAL or NTSC playback.



LCD STANDBY – Select how long before the LCD display will turn off.



REVIEW OPTIONS



VIDEO – Enter the **VIDEO** folder to review your recordings.



JPEG – Enter the **JPEG** folder to review your photos.



EVENT – Enter the **EVENT** folder to review your emergency event files.



ESC – Press the **ESC** icon to exit the **REVIEW** menu.

PREVIEW / RECORDING

During **PREVIEW / RECORDING** mode the on screen display indicators will indicate the various features and functions as shown.



During **PREVIEW / RECORDING** mode the buttons will function as follows.



POWER/REC - Start or stop a recording.



MUTE – Enable or disable audio recording.



MENU – Stop any recording and enter the menu.



EMERGENCY – In Preview mode it will enter folder select mode for playback, in Recording mode it will protect the current recording segment from being overwritten.

CAPTURE MODE

In **CAPTURE MODE** the on screen display indicators will indicate the various features and functions as shown.



During **CAPTURE MODE** the buttons will function as follows.



POWER/REC – Short press to take a photo.



MUTE – No function while in capture mode.



MENU – Enter the menu.



EMERGENCY – Enter folder select mode.

BROWSE

When in file browse mode the on screen display will show as below.



During **BROWSE MODE** the buttons will function as follows.



POWER/REC – Short press to return to preview mode.



MUTE – Return to the folder select menu.



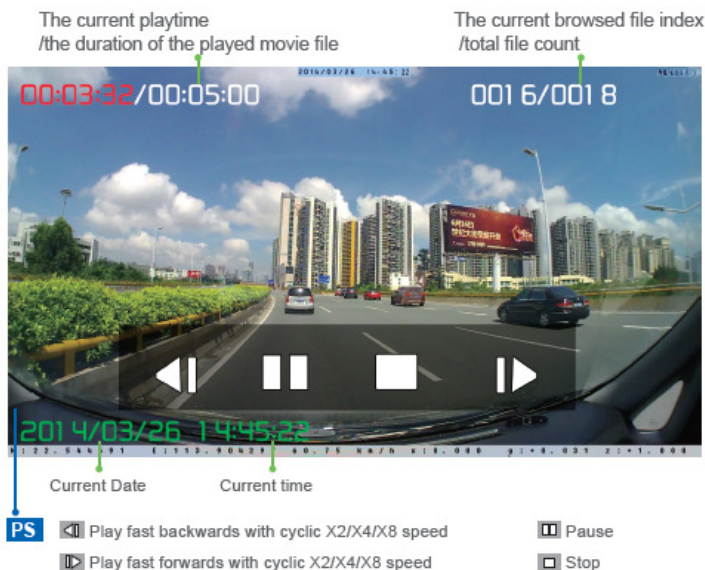
MENU – Switch to the delete option.



EMERGENCY – Return to preview mode.

MOVIE PLAYBACK

In **MOVIE PLAYBACK** mode the on screen display indicators will indicate the various features and functions as shown.



During **MOVIE PLAYBACK** mode the buttons will function as follows.



POWER/REC – Short press to return to preview mode.



MUTE – Show the playback control options.



MENU – Show the review menu.



EMERGENCY – Return to preview mode.

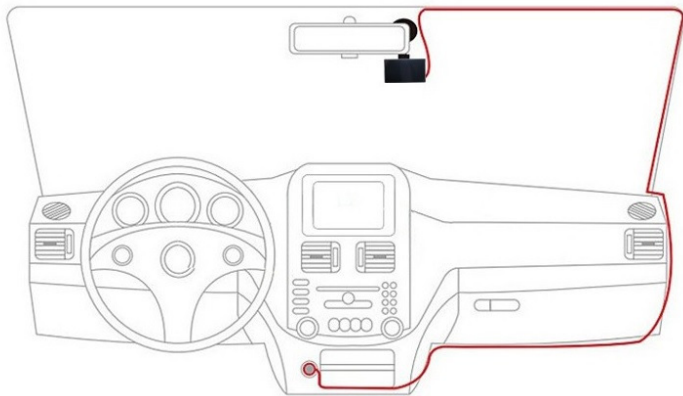
INSTALLING THE DVR

1. Power off the vehicle.
2. Insert the SD card into the memory card slot.
3. Secure the mount bracket to the front windshield of the vehicle using the provided 3M or suction mount.


[Note] The DVR should preferably be mounted behind, or to either side of the rearview mirror and within the sweep area of the windscreen wipers. Before mounting the DVR ensure that there is enough room for the cables and clean the glass prior to installation to ensure the mount is attached securely, it is always advisable to route any cables across the passenger side of the vehicle to avoid any chance of cables interfering with control of the vehicle or causing a distraction should a cable come loose.

4. Fix the power cable properly and securely.
5. Insert the vehicle power adapter into the cigarette lighter socket of the vehicle.
6. Insert the power connector of the vehicle adapter into the DC in socket of the camera.

7. Adjust the angle of the camera ensuring that the camera lens is aimed slightly down from the horizon (40% sky, 60% road), this will improve the results of the auto white balance function.



[Note] Video performance is adversely affected if the window is not kept clean, ammonia free automotive glass cleaners are recommended for the inside glass surfaces for optimum results.

 When the camera is powered up the capacitor icon will show on screen for a few moments while it is recharging, once charged the camera will automatically commence recording.

TECHNICAL SPECIFICATIONS

Processor	Zoran Coach 12P
Image Sensor	Sony Exmor IMX122
Lens	7 Element glass lens
Angle of View	154° Diagonal
Max Resolution	Full HD 1920×1080
Frame Rate	30FPS
Video Format	H.264 MP4
AV Output	NTSC/PAL
LCD display	2.7-inch
Storage Temp	-4°F to 194°F
Operating Temp:	-4°F to 176°F
Operating Humidity	15% to 65% (RH)
Memory Card	4 GB to 256 GB*
Standard Voltage	DC12v/24v

***Memory cards larger than 32GB should be formatted FAT32 for optimal results.**

Please note, all attempts are made to ensure that the information contained in this user manual is correct at time of publication, the specifications and details within this manual are based on the North American market version of the product and are subject to change, information about the latest specification, any amendments, the availability of replacement parts & accessories, warranty information, detail of other sales region product specification and the respective user manuals will be listed at our website at www.streetguardian.info



© Street Guardian 2014